

THE WINDOWBOX PILLOW



LAUREN+JESSI JUNG

THE WINDOWBOX PILLOW is the perfect project with a springtime flair, that is sure to be loved by all. It contains detailed instructions and diagrams to guide you through every step of the way.

SUPPLIES /

The pillow on the cover is shown using HIDEAWAY by Lauren + Jessi Jung

Scenery Fabric /
1/2 yard

Frame & Borders /
1/2 yard

Interfacing/BATTING /
24" square

Flowers /
6-8 (2 1/2" x 3") fabric scraps

Buttons /
2 per flower

Pillow Form /
16" x 16"

Optional /
DMC Floss

DIMENSIONS / (Finished Pillow Size) 20" x 20"

WEBSITE / www.LaurenAndJessiJung.com

BLOG / www.LaurenAndJessiBlog.com



THE WINDOWBOX PILLOW

by: Lauren + Jessi Jung

Read through complete pattern instructions before starting. | Use a ¼" seam allowance.

CUTTING INSTRUCTIONS

SCENERY FABRIC

- Back : 1 (17 ½" × 25 ½") rectangle
- Front Top Panels : 2 (8 ½" × 8 ½") squares
- Front Bottom Panels : 2 (6" × 8 ½") rectangles

FRAME/BORDER FABRIC

FRONT

- a/ Horizontal Frame: 2 (1 ½" × 8 ½") strips
- b/ Vertical Frame : 1 (1 ½" × 15") strip
- c/ Side Borders : 2 (2" × 15") strips
- d/ Top Border : 1 (2" × 20 ½") strip
- e/ Window Box : 1 (4 ¼" × 20 ½") strip

BACK

- f/ Side Borders : 2 (2" × 17 ½")
- g/ Top and Bottom Borders : 2 (2" × 28 ½") strips

FLOWERS

- h/ Flowers : 6-8 (2 ¾" × 9") scraps



PILLOW FRONT DIRECTIONS

- 1 a/ Sew a 1 ½" × 8 ½" window frame strip to the bottom of an 8 ½" × 8 ½" scenery panel.
b/ Press towards frame.



- 2 a/ Sew a 6" × 8 ½" scenery panel to the unit so that a fabric strip is positioned between each scenery frame.
b/ Press towards frame.



- 3 Repeat Steps 1 and 2 to create a second unit.
- 4 a/ Sew a 1 ½" × 15" window frame strip vertically, between the two window units to create a complete window.
b/ Press towards center strip.



- 5 a/ Sew 2" × 15" border strips to each side of window.
b/ Press towards border strips.



- 6 a/ Sew a 2" × 20 ½" border strip to top of window.
b/ Press towards border strip.



- 7 a/ Sew a $4\frac{1}{4}$ " \times $20\frac{1}{2}$ " window box strip to bottom of window.
b/ Press towards window box.



PILLOW BACK DIRECTIONS

- 8 a/ Sew 2 " \times $17\frac{1}{2}$ " border strips to each side of pillow back panel.
b/ Press towards border strips.



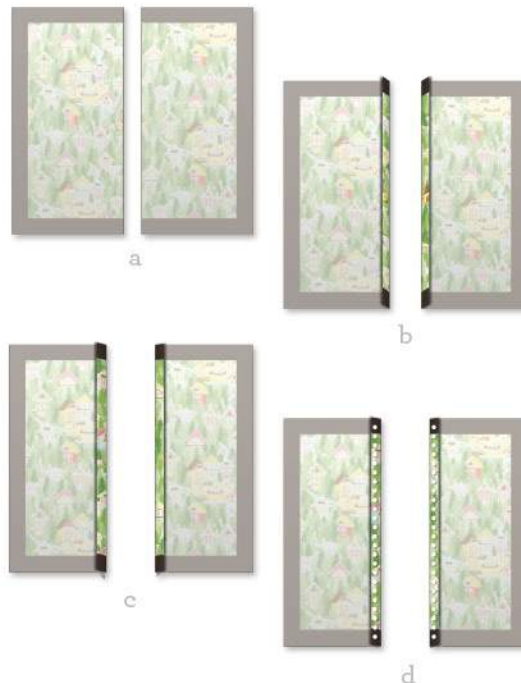
- 9 a/ Sew 2 " \times $28\frac{1}{2}$ " border strips to top and bottom of panel.
b/ Press towards border strips.



- 10 Cut pillow back in half vertically.



- 11 a/ Make sure the right side is facing down.
b/ Fold each cut edge under $\frac{1}{2}$ ",
c/ and under again $\frac{1}{2}$ ".
d/ Press and topstitch seamed edges.



PILLOW CONSTRUCTION

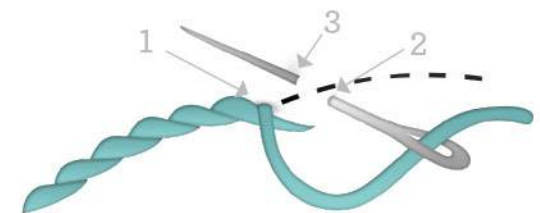
- 12 a/ Layer pillow FRONT directly on top of interfacing.
b/ Pin. (no backing required)
Quilt as desired.



OPTIONAL: Using 3 strands of DMC floss, decorate window box using a stem stitch. (Remember, flowers will cover top area of window box.)



NOTE: Stem stitch: Knot end. Up at 1. Down at 2. Up at 3 (midpoint between 1 and 2).



- 13 Trim interfacing to match pillow front edges (20 1/2" x 20 1/2").



NOTE: Do not layer or quilt pillow back halves.

- 14 Place pillow back halves on top of pillow front, right sides together, matching outer side edges of pillow front and back. (Hemmed edges will overlap at center of pillow back.)



- 15 a/ Stitch along 4 (outer) sides.
b/ Turn pillow right side out.

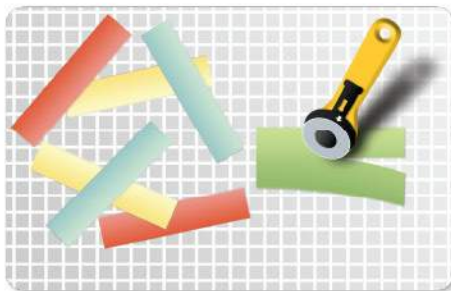


- 16 Press seams flat.

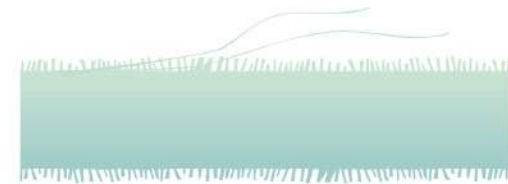


FLOWER CONSTRUCTION

- 17 Cut scraps from 6-8 different fabrics to measure approximately 2 1/2" x 9".



- 18 Fray long edges of rectangles with a needle or pin.



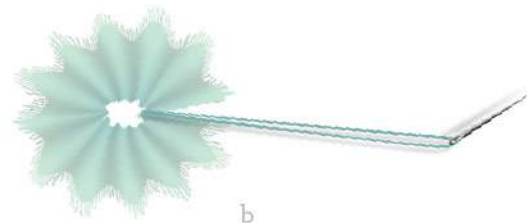
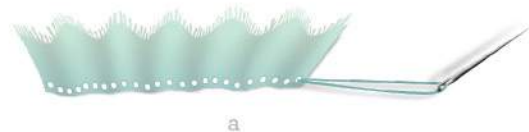
- 19 Fold fabric in half lengthwise, wrong sides together, with slightly uneven long edges. Press.



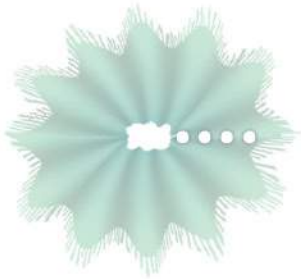
- 20 Using a double-threaded needle that has been knotted at the end, hand-sew a running stitch along fold.



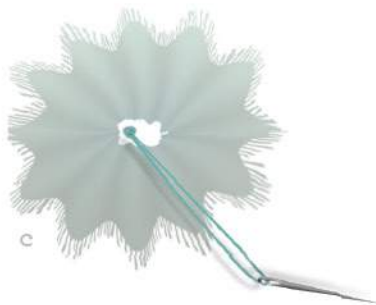
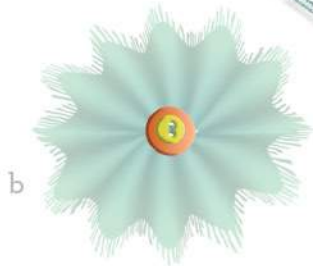
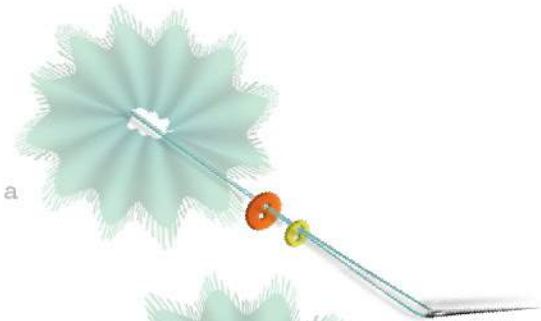
- 21 a/ Tightly draw up thread, b/ forming a circular flower. (Knot to secure.)



- 22 Tack flower ends together with a few stitches to secure.



- 23 a/ Take needle up through center hole, b/ and thread a double layer of buttons to flower center. c/ Knot thread underneath flower to finish.



- 24 Tack flowers on to pillow front so that they appear to be growing out of window box.



FLANGE PILLOW

- 25 Using a water soluble pen, draw a line 1 1/2" up from bottom edge of window box, and sides of window box to represent flanged border.



- 26 Now, tightly hand baste around flange borders, aligning pillow front and back flange seams of borders with thread.



- 27 Following basting stitch, machine sew border edges to produce a 1 1/2" flanged edge surrounding the pillow. Remove basting stitches. Insert pillow form.

