



LAUREN+JESSI JUNG

GARDEN TRELLIS

This is our GARDEN TRELLIS QUILT. And it's the perfect accessory for springtime picnics or garden tea parties. It features a trellis in the foreground that weaves its way through our bright and lively Flora fabrics in the background. It is simple to make, and consists of one layer cake, plus fabric for the borders, binding, and lattice strips.

SUPPLIES /

The quilt on the cover is shown using Flora by Lauren + Jessi Jung

Blocks /

1 layer cake

Trellis and Inner Border /

1 $\frac{1}{3}$ yards

Outer Border /

1 $\frac{1}{3}$ yards

Bee Body /

5" square

Bee Wings /

5" square

Backing /

4 yards

Batting /

Twin Size

Binding /

$\frac{1}{2}$ yard

DMC Floss

QUILT SIZE / 64" x 64"

BLOCK COUNT / 41

WEBSITE / www.LaurenAndJessiJung.com

BLOG / www.LaurenAndJessiBlog.com



GARDEN TRELLIS QUILT

by: Lauren + Jessi Jung

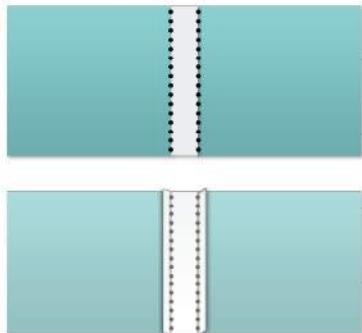
Read through complete pattern instructions before starting. | Use a $\frac{1}{4}$ " seam allowance.

CUTTING INSTRUCTIONS

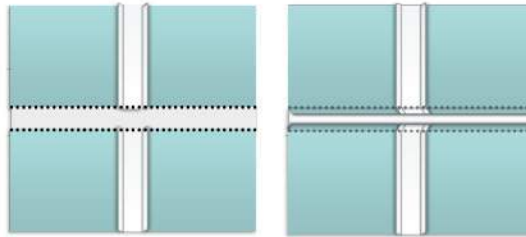
- 1 From EACH layer cake square, cut:
4 ($4\frac{1}{2}$ " \times $4\frac{1}{2}$ " squares (41 total)
- 2 From the Trellis and Inner Border Fabric, cut:
A : 82 ($1\frac{1}{4}$ " \times $4\frac{1}{2}$ " strips
B : 41 ($1\frac{1}{4}$ " \times $9\frac{1}{4}$ " strips
C : 2 ($1\frac{1}{2}$ " \times 50" strips
D : 2 ($1\frac{1}{2}$ " \times 52" strips)
- 3 From the Outer Border Fabric, cut:
A : 2 ($6\frac{1}{4}$ " \times 52" strips
B : 2 ($6\frac{1}{4}$ " \times 64" strips)
- 4 For the bee embellishment: Use remaining layer cake fabrics and cut:
A : 1 (5" \times 5") square for wings
B : 1 (5" \times 5") square for body

CONSTRUCTION

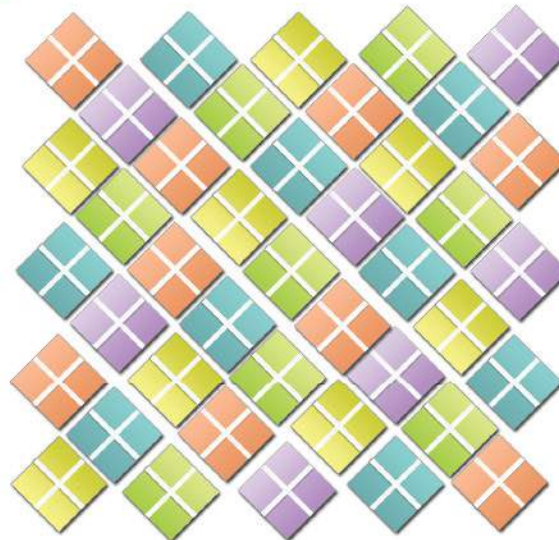
- 5 With right sides together, sew a ($1\frac{1}{4}$ " \times $4\frac{1}{2}$ " strip in between 2 ($4\frac{1}{2}$ " squares. Press seams towards squares.



- 6 Repeat procedure for other half of block.
- 7 With right sides together, sew a ($1\frac{1}{4}$ " \times $9\frac{1}{4}$ " strip in between 2 block halves. Press seams towards strip.



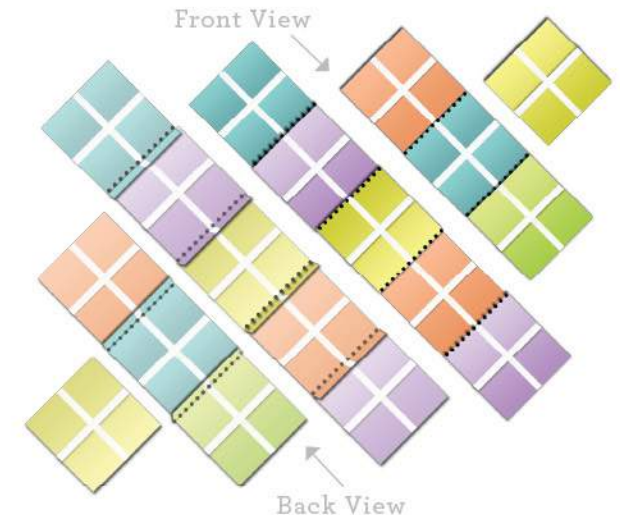
- 8 Repeat steps to make a total of 41 blocks.
- 9 Arrange blocks in diagonal rows.



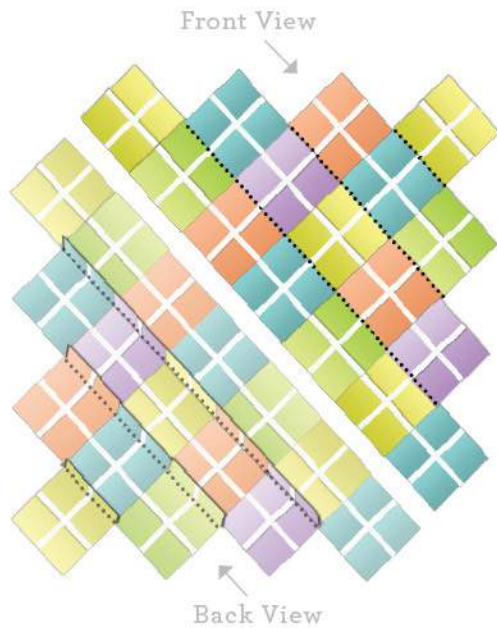
NOTE: Be sure to line blocks so that the short trellis strip from one block lines up with a long trellis strip from the next block. This will allow pressed seam allowances to butt up against each other when sewn, to ensure a snug fit.



- 10 Sew Blocks into rows. Press seams, alternating the direction with each row.



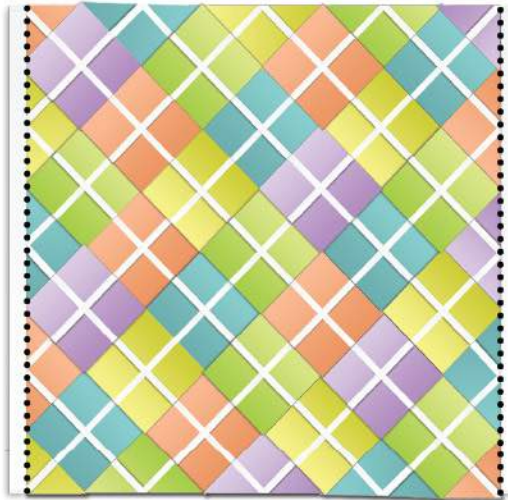
- 11 Sew Rows together. Press all seams in one direction



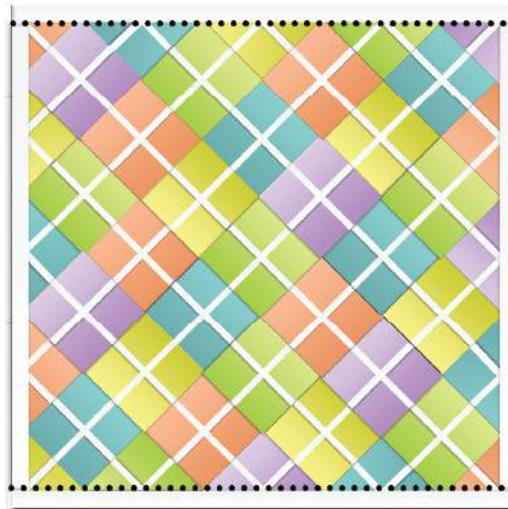
- 12 Re-size quilt top by trimming off outer points, leaving a $\frac{1}{4}$ " seam allowance from inner block points.



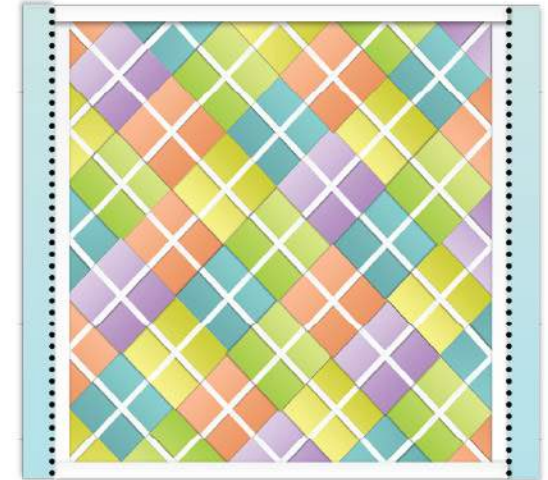
- 13 Sew 2 trellis strips ($1\frac{1}{2}$ " \times 50") to sides of quilt. Press seams towards border trellis.



- 14 Sew 2 trellis strips ($1\frac{1}{2}$ " \times 52") to top and bottom of quilt. Press seams towards border.



- 15 Sew 2 ($6\frac{1}{4}$ " \times 52") strips to sides of quilt. Press seams towards borders.



- 16 Sew 2 ($6\frac{1}{4}$ " \times 64") strips to top and bottom of quilt. Press seams towards borders.

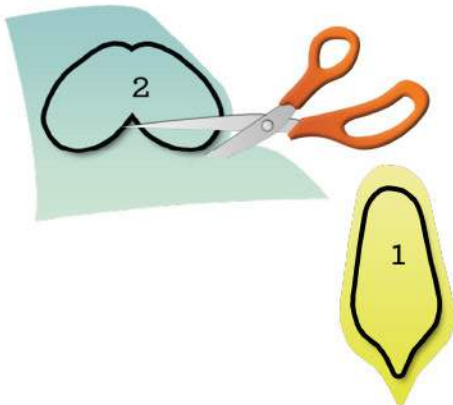


APPLIQUÉ INSTRUCTIONS

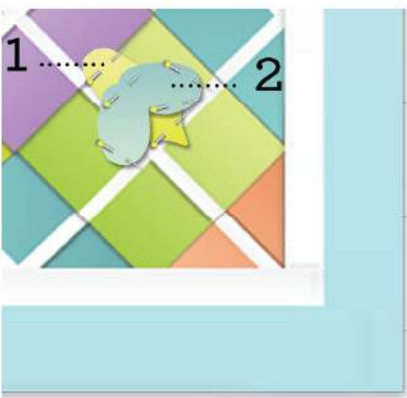
- 17 Trace bee pattern pieces on to fabric.



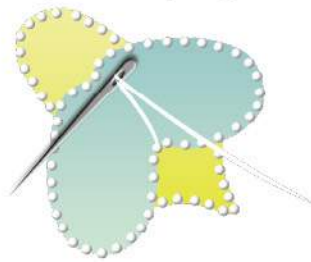
- 18 Cut out the bee fabric pieces, leaving a 1/8" edge surrounding each piece.



- 19 Pin bee body and wings to corner of quilt top, positioning them to suit your preference.



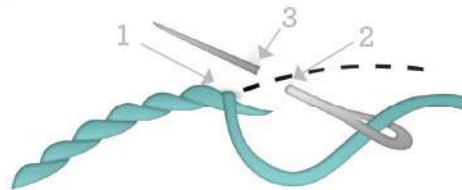
- 20 Use needle-turn method of appliqué, sewing bee body on first, followed by wings.



EMBELLISHMENTS

NOTE: Draw embellishments on fabric with a water soluble marking pen.

- 21 a / With 3 strands of DMC floss, add antennae, using a stem stitch.



NOTE: **Stem stitch:** Knot end. Up at 1. Down at 2. Up at 3 (midpoint between 1 and 2).

- b / Sew flight pattern using a running stitch.



Layer, pin and quilt as desired. Bind edges to complete quilt.

NOTE: "In the ditch" quilting along trellis edges creates a 3-D illusion of trellis being in the foreground.

FINISHED QUILT



Happy Quilting!

TEMPLATES

