

## DIMENSIONS:

- Finished Pillow Size: 18" × 18"

## SUPPLIES:

- **Pillow Background:**  $\frac{2}{3}$  yard
- **Front Flower (top):** fat quarter
- **Front Flower (bottom):** fat quarter
- **Back Flower:** fat quarter
- **Flower Bases (top):** scrap pieces
- **Flower Bases (bottom):** scrap pieces
- **Flower Veins:** fat quarter or scrap pieces
- **Pollen Balls:** scrap pieces
- **Muslin:**  $\frac{2}{3}$  yard
- **Interfacing:** 2 (12" × 12") squares
- **Thread:** for zig-zag stitch on stamen lines
- **Batting**
- **18" Pillow Form**

# BLOOMING GLORY PILLOWS



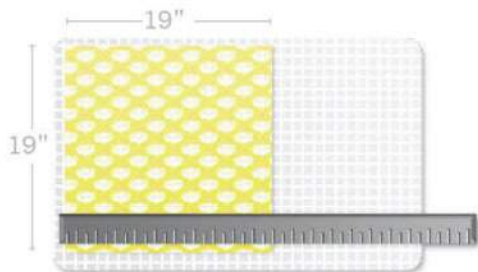
# Blooming Glories Pillows

Lauren + Jessi Jung

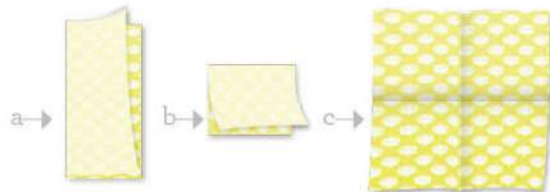
Read through the complete pattern instructions before starting.

## PILLOW FRONTS

- 1 Cut a 19" x 19" square for pillow background.



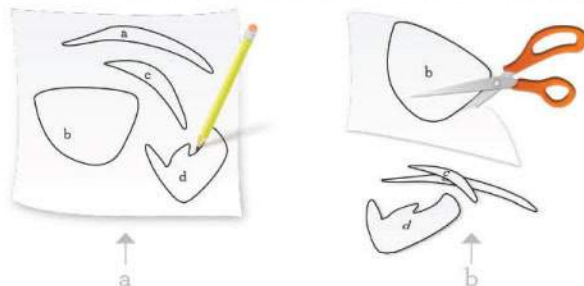
- 2 a/ Fold square in half vertically  
b/ and again horizontally.  
c/ Press folds.



**NOTE:** Fold lines assist in appliqué placement.

- 3 a/ Trace pattern pieces from templates on to dull side of freezer paper. (Be sure to add the identifying letters to each piece.)  
b/ Cut out pieces.

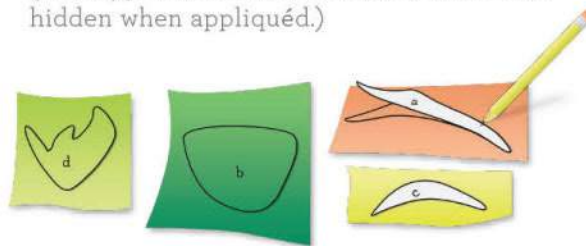
**Hint:** Freezer paper is transparent, so lay it on top of the diagram, then trace.



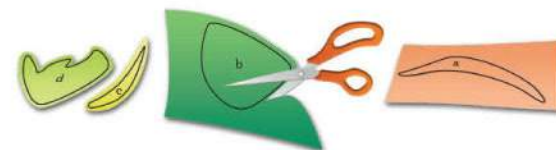
- 4 Press cutout freezer paper pieces, shiny side down, on the right side of your chosen fabric using a dry iron. (Pieces will temporarily stick to fabrics.)



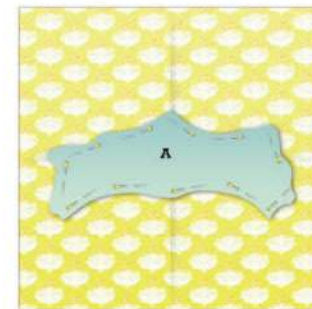
- 5 Trace around pattern pieces on right side of fabric using a mechanical pencil or pen. (Pencil/pen marks will be turned under and hidden when appliquéd.)



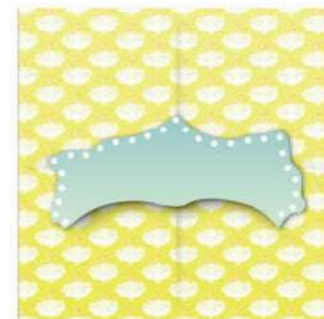
- 6 Cut out drawn pieces leaving a 1/8" edge surrounding each fabric piece.



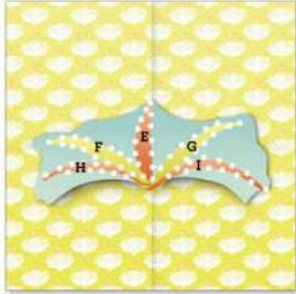
- 7 Position and pin pattern piece A on the background square, referring to fold lines as guides.



- 8 Use the needle-turn appliqué method to sew top and sides of pattern piece A on to background square. (Do not appliqué bottom of pattern piece A.)

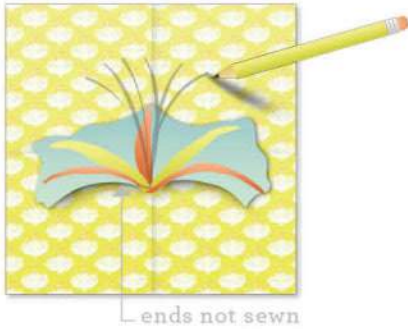


- 9 Appliqué pattern pieces E, F, G, H, and I (in that order) on to pattern piece A. Pieces will overlap at flower center.

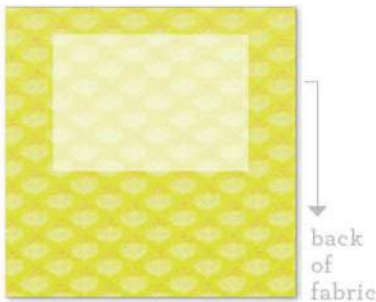


**NOTE:** There's no need to appliqué pieces that will be covered by other layers.

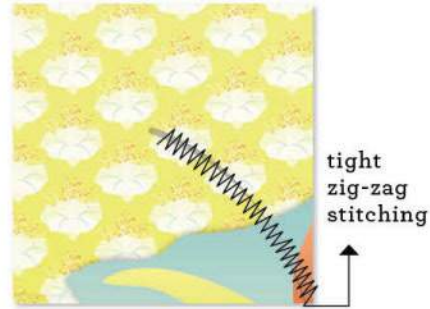
- 10 Beginning at flower center, draw stamen lines with a water soluble marker.



- 11 Position interfacing square behind background square to match the area where the stamen lines have been drawn. Follow directions on interfacing package for applying.



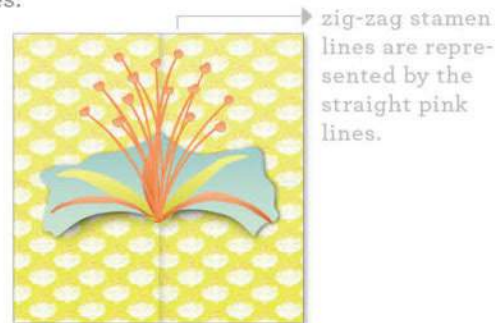
- 12 Using a tight, thin zig-zag stitch, stitch over drawn stamen lines.  
**NOTE:** I use a height of 1.5, and a width (or closeness) of .4.



- 13 After zig-zagging stamen lines, cut off excess interfacing.



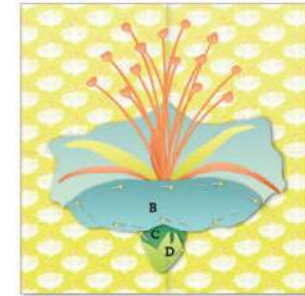
- 14 Appliqué pollen balls to tips of stamen lines.



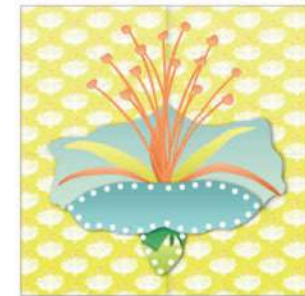
**NOTE:** Cut out a variety of irregularly shaped circles to make up the 15-20 pollen balls.

- 15 Position and pin pattern pieces B, C, and D on to background square, referring to fold lines as guides. Flower top veins will tuck into the center of the flower, and be hidden under pattern piece B.

**HINT:** Pattern Piece B will overlap the open bottom of A.



- 16 Appliqué pattern pieces B, C, and D by layers, except at core of flower center.



- 17 Appliqué pattern pieces J, K, L, M, and N (in that order) on top of pattern piece B. Pieces will overlap at flower center.

**NOTE:** No need to appliqué pieces where they will be covered by overlapping layers; Cut excess vein bulk which will be hidden under pattern pieces A and B.

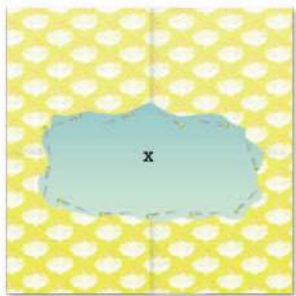


18 Finish appliquéing flower center.



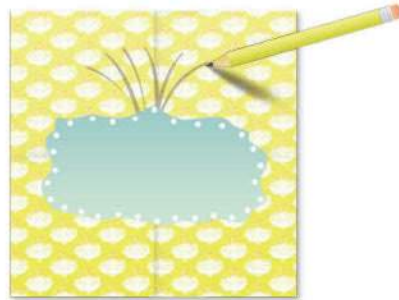
## PILLOW BACKS

19 **NOTE:** First, follow Steps 1 through 6 of *Pillow Front instructions BUT use Templates 4, 5, and 6 (marked Pillow Back Pieces)*. Position and pin pattern piece X on to background square, referring to fold lines as guides.

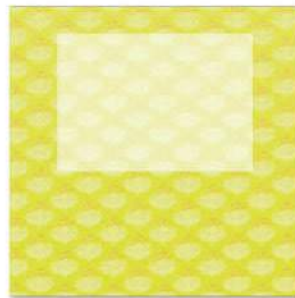


20 Before appliquéing, draw stamen lines on to background square with soluble marker.

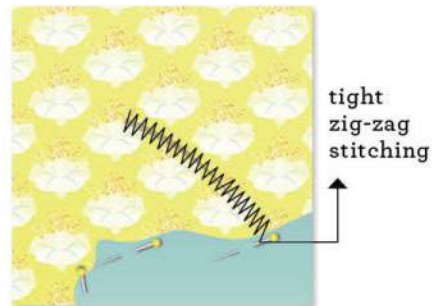
**NOTE:** Pattern piece X will overlap the base of these zig-zag guides.



21 Position interfacing behind pillow square as in step 11.



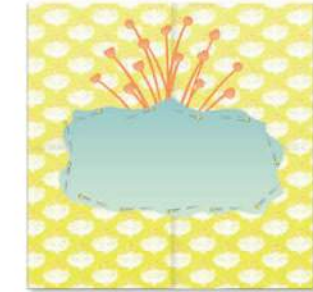
22 Zig-zag over drawn stamen lines.



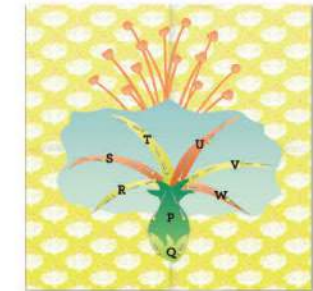
23 Cut off excess interfacing.



24 Appliqué pollen balls to tips of stamens.



25 Position and pin pattern pieces P, Q, R, S, T, U, V, and W on to piece X.

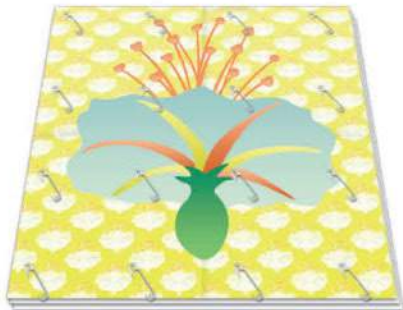


26 Appliqué pattern pieces in alphabetical order.



## QUILTING INSTRUCTIONS

- 27 Sandwich pillow front with batting and muslin. Safety pin to secure layers.

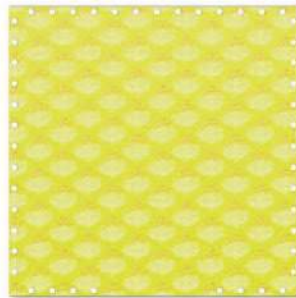


- 28 Quilt in ditch to outline piece, or quilt as desired. Repeat procedure for the back and then trim squares to measure 18 1/2" x 18 1/2".

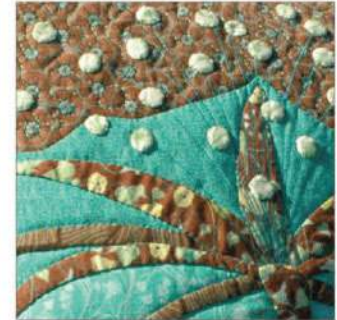
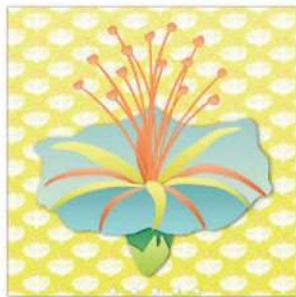


## PILLOW CONSTRUCTION

- 29 With right sides together, sew pillow front to pillow back, leaving enough of an opening to squeeze a pillow form through—about 14 inches.



- 30 Turn pillow casing right side out and squeeze pillow form through opening. Hand-stitch the opening closed to complete pillow.



Detail



Front

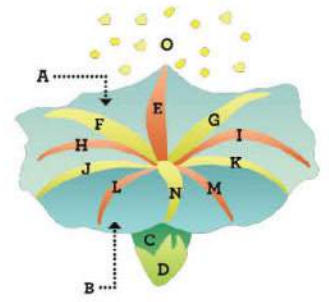


Back

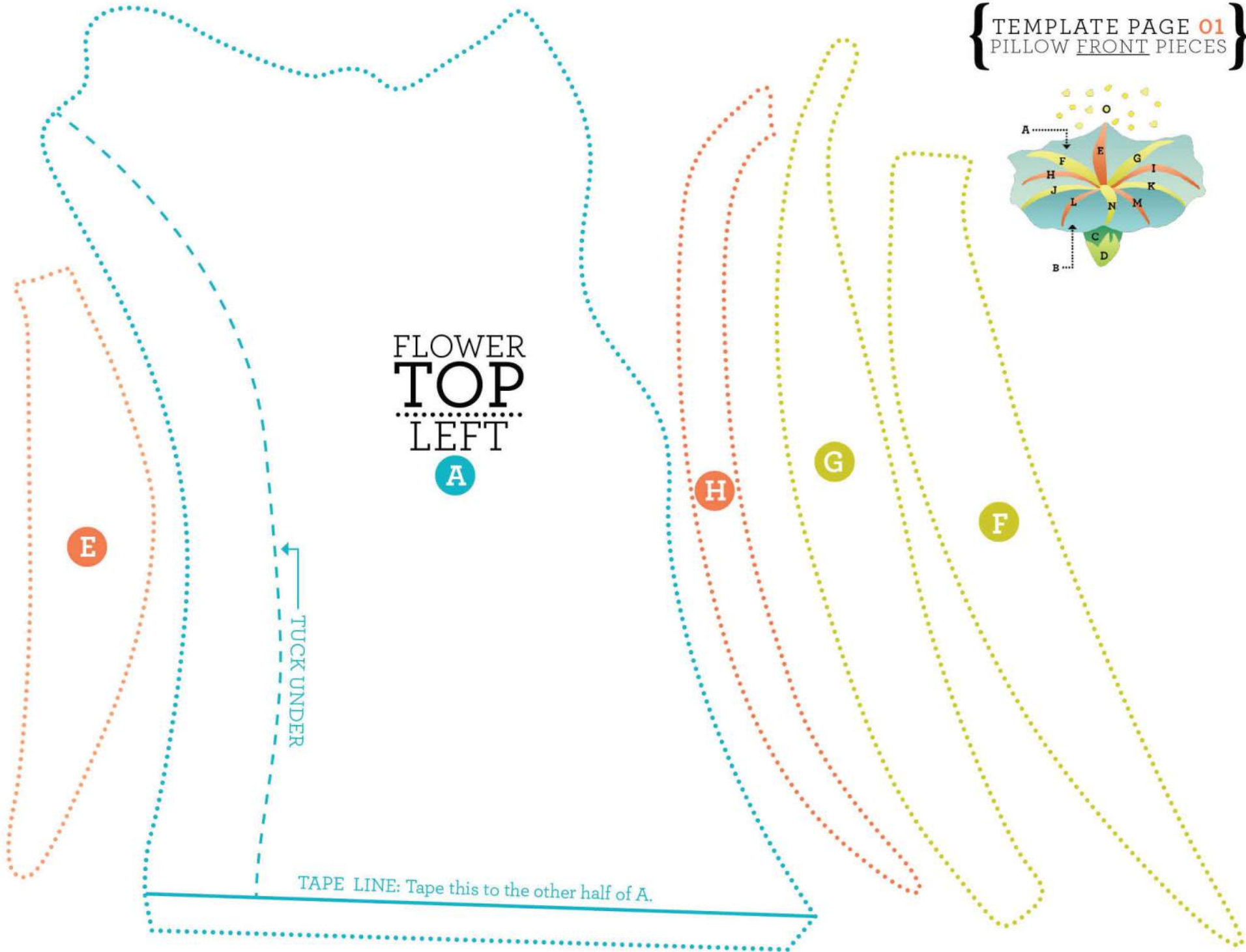
### Lauren+Jessi

are excited to introduce their first fabric line, Botany!

If you have any questions regarding the directions to this pattern, please let me know on our blog!  
[www.LaurenAndJessiBlog.com](http://www.LaurenAndJessiBlog.com)

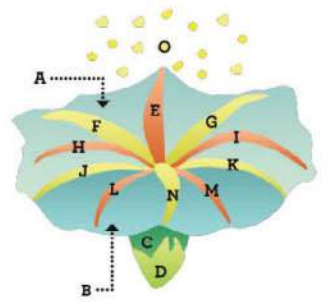


FLOWER  
**TOP**  
LEFT  
A



TUCK UNDER

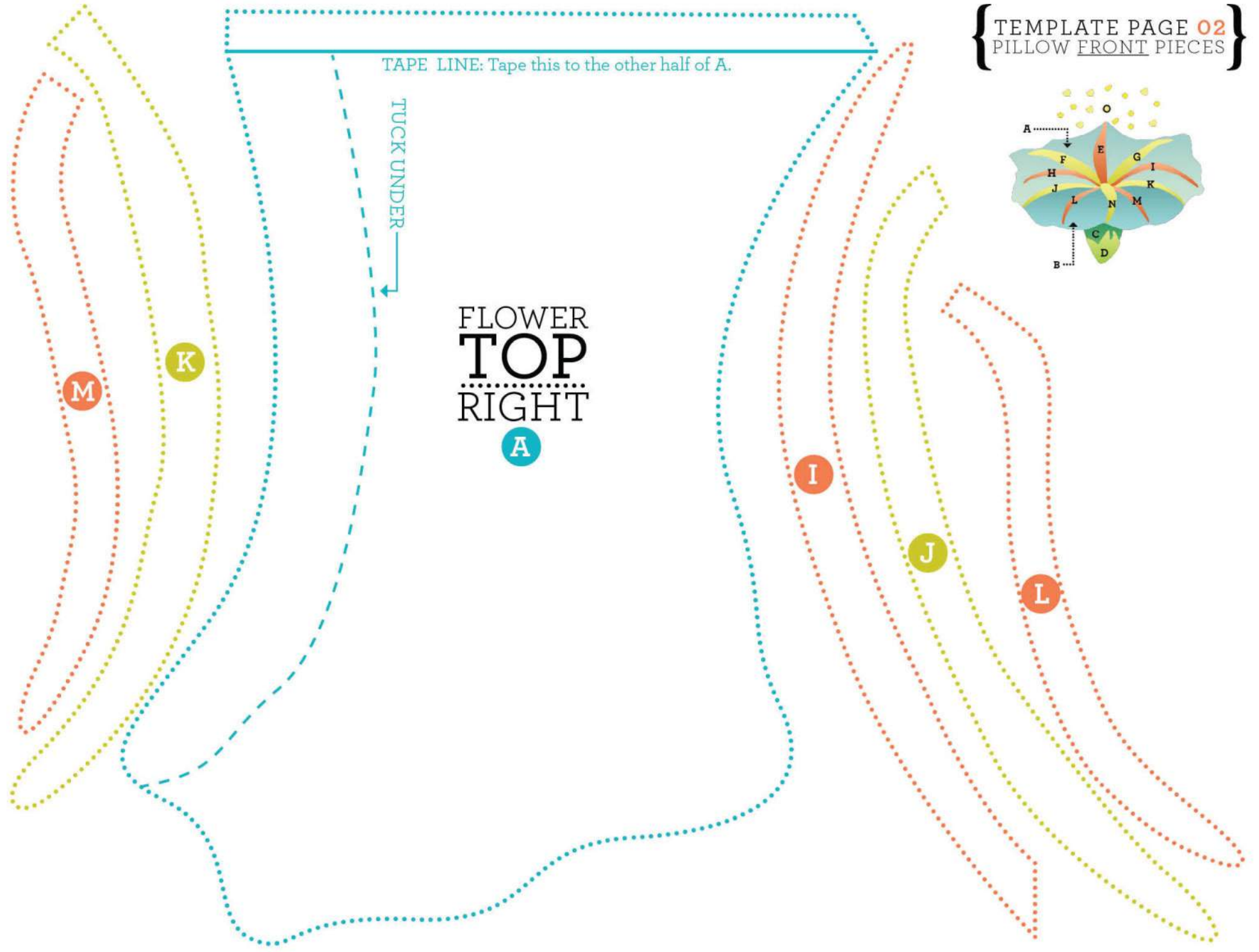
TAPE LINE: Tape this to the other half of A.

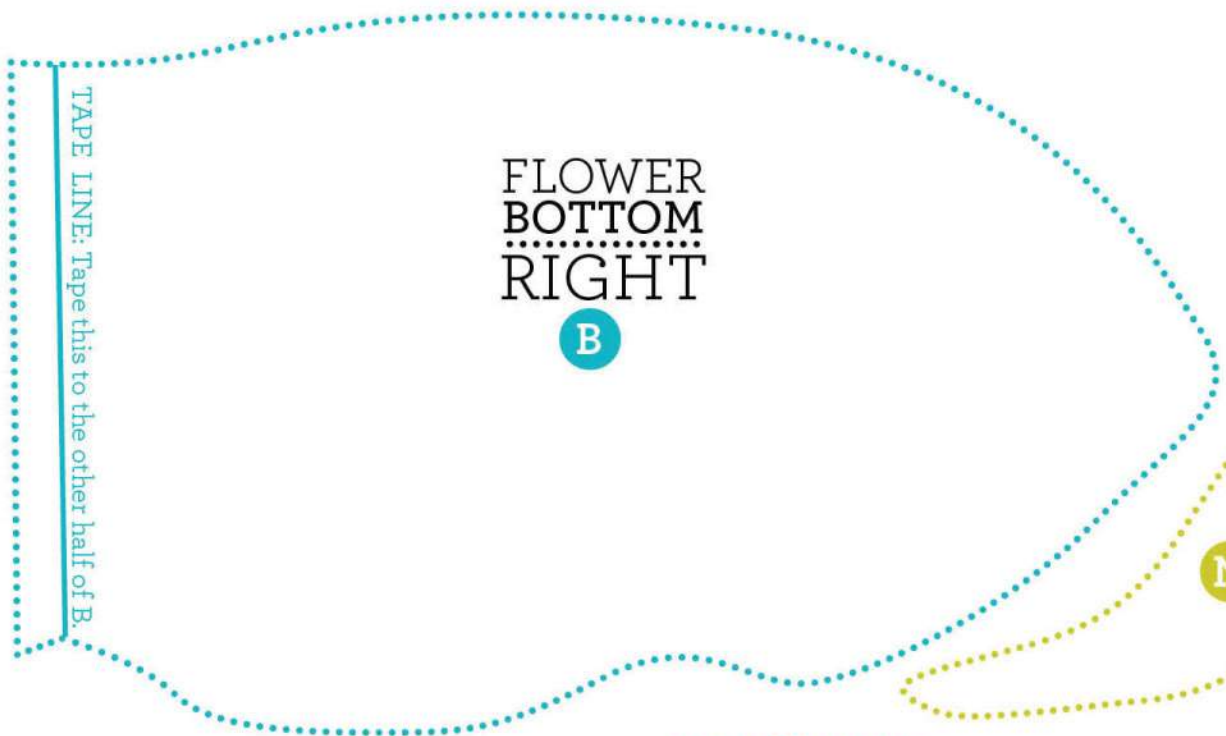
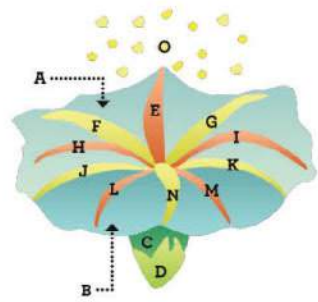


TAPE LINE: Tape this to the other half of A.

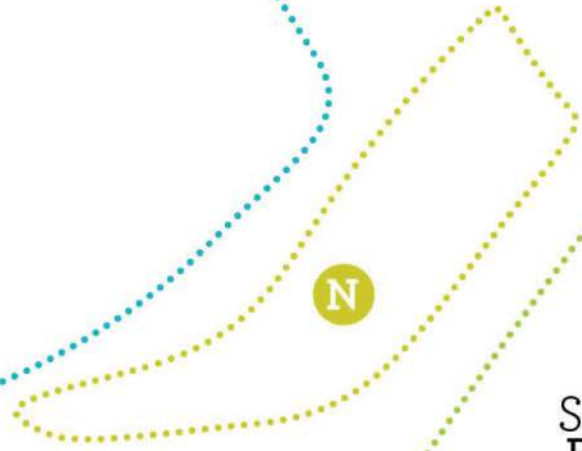
TUCK UNDER

FLOWER  
TOP  
RIGHT  
A



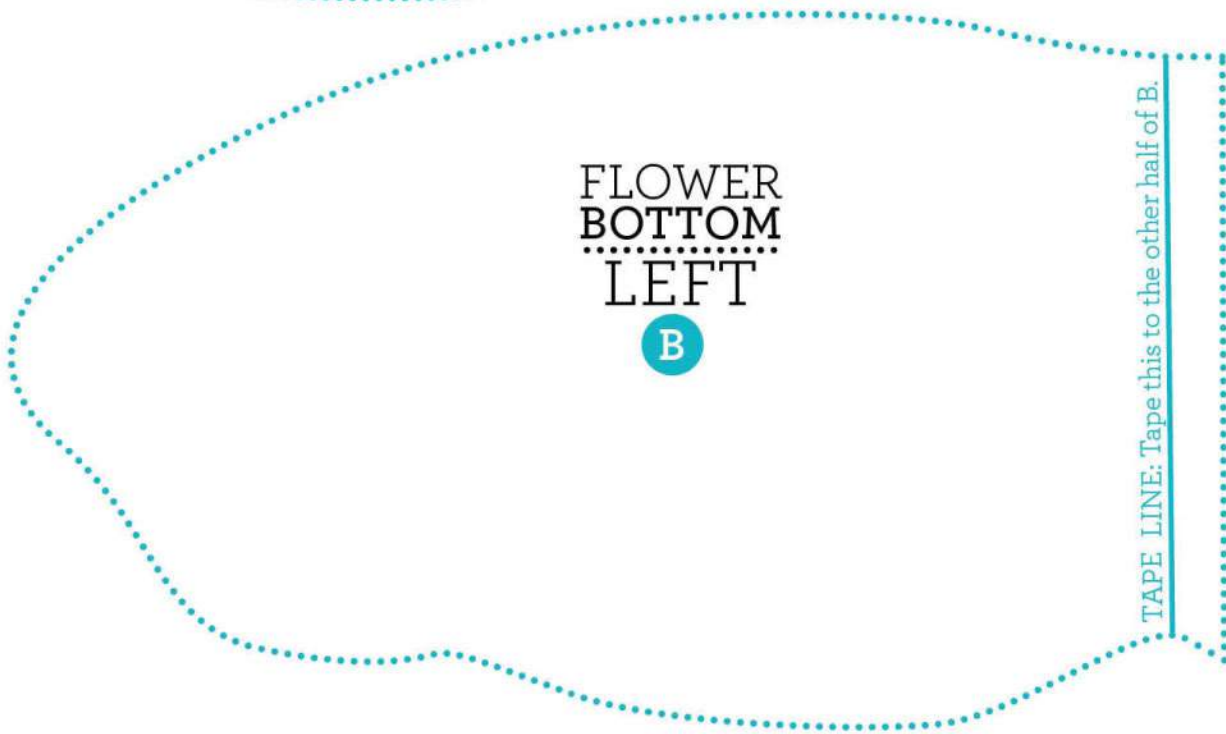


FLOWER  
BOTTOM  
RIGHT  
B



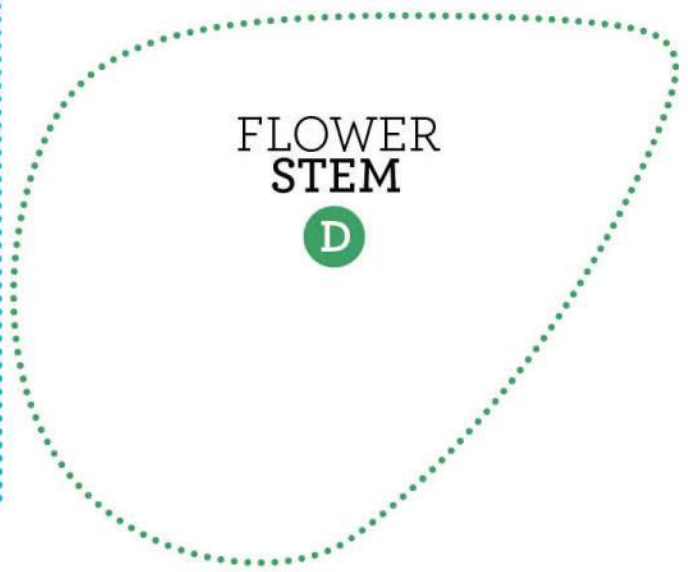
N

STEM  
BASE  
C



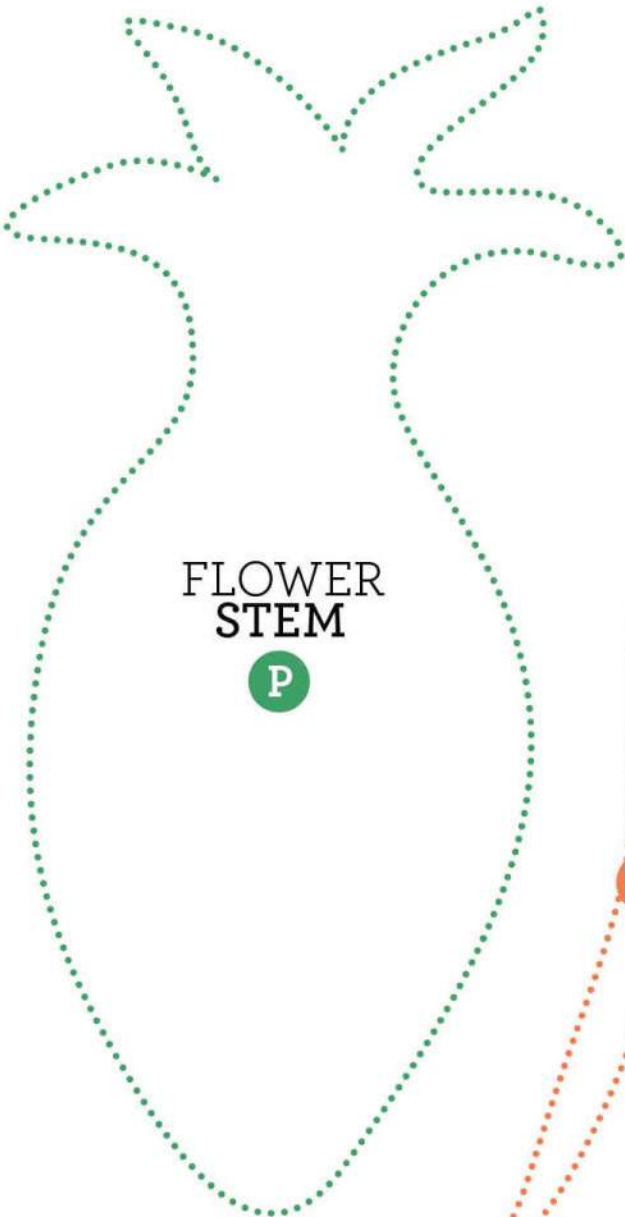
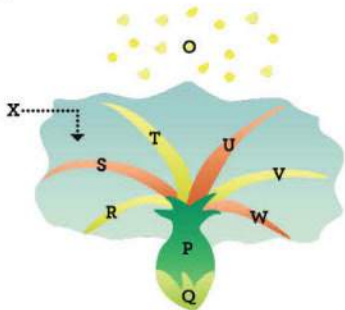
FLOWER  
BOTTOM  
LEFT  
B

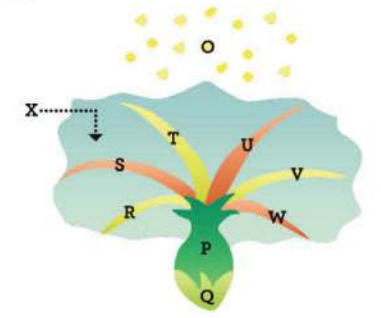
TAPE LINE: Tape this to the other half of B.



FLOWER  
STEM  
D

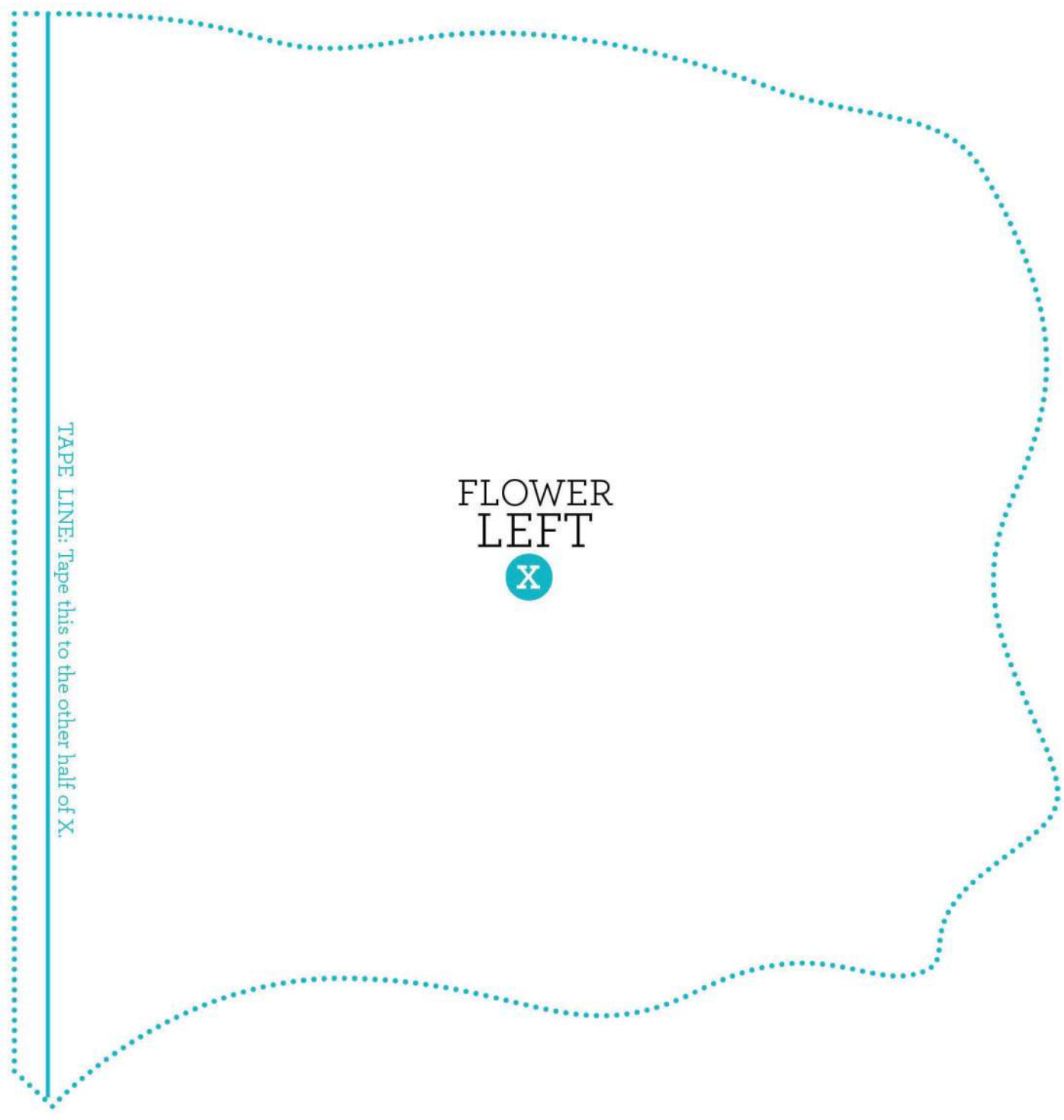


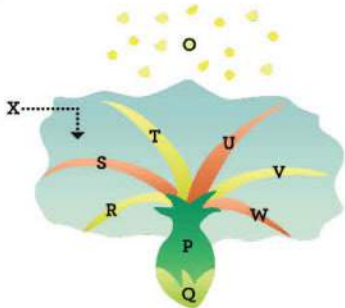




FLOWER  
LEFT  
X

TAPE LINE: Tape this to the other half of X.





FLOWER  
RIGHT  
X

TAPE LINE: Tape this to the other half of X.

